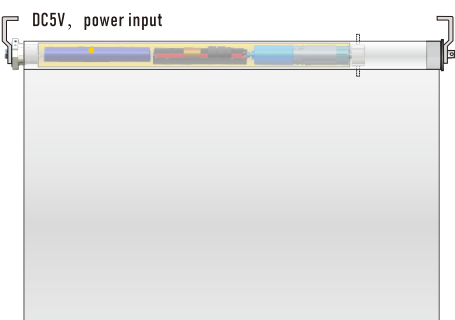


Programming Instructions - Ryze Motor



MOTOR FEATURES

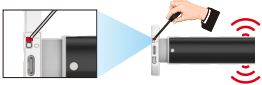
- Energy saving design, powered by large capacity Li-ion battery.
- Motor can do both RF remote control and APP control via Zigbee communication protocol
- Easy operation intelligent motor. Can be programmed by either remote or smart phone using APP.
- Patented smooth and quiet design; Soft start and soft stop; Running noise level as low as 35dB.
- Automatic low battery buzzer warning reminding you to charge motor.
- Motor can set 6 limits, including top/bottom limits and 4 favorite intermediate positions.
- Various user friendly features with the app.



POWER SOURCE & CHARGING

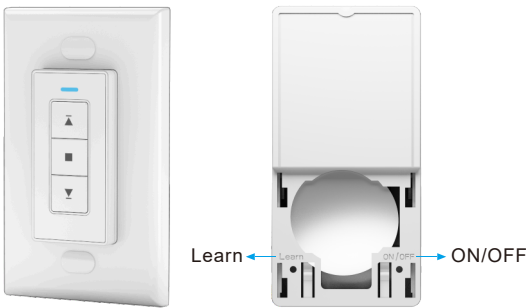
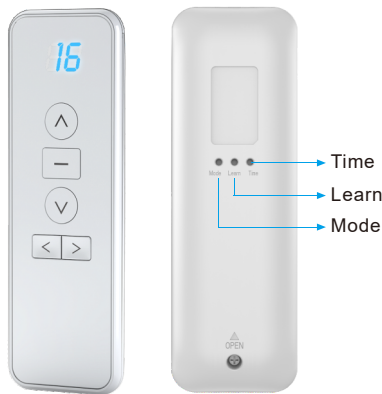
- Built-in Li-ion battery. Can be recharged without removing motor. Charging kit includes a wall plug and 10-ft USB-C charging cable. Kit purchased separately.
- A full charge typically lasts for 4-6 months. This length can vary with shade use frequency.
- Charging time is 6-8 hours.

Tips:
1. For longer life service of the motorized shade, we suggest all li-ion battery motors be charged every 6 months to avoid battery discharge.
2. Please turn the switch to "1" on the motor head before charging



3. Please charge the motor fully before first use. Green LED will indicate motor is fully charged.

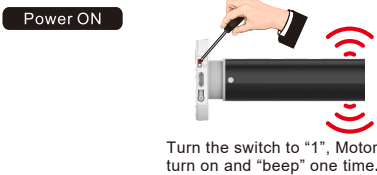
REMOTE LAYOUT



Operation Instruction

1. Power ON/OFF

* After switching off power, the motor will not be able to receive remote signals.



Turn the switch to "1", Motor will turn on and "beep" one time.



Turn the switch to "0", Motor is now off.

2. Programming Preparation

* If there is no action in 10 seconds, the motor will exit programming automatically.

Method A



Press the PROG button for 1s

Motor will beep and then jog once. The motor now is in programming mode.

Method B



If the remote had been previously paired with the motor, press and hold STOP for 5 seconds

Motor will jog once and enter programming mode

3. Paring remote



Press the UP button on the remote



Motor will jog once. The motor and remote are now paired.

4. Change running mode (Continuous vs Jog)

(Continuous mode: When hitting the up/down button, motor will immediately run to next limit)
(Jogging mode: When hitting the up/down button for less than 1", the motor will take small steps. When pressing for more than 1", motor will run to next limit)



Press and hold STOP for 5 seconds. Motor will jog once and enter programming mode



Press the STOP button again



Motor will jog once to confirm the running mode, the motor running mode is now changed

5. Change direction



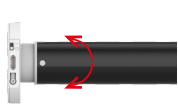
Press and hold STOP for 5 seconds



Motor will jog once and enter programming mode



Press the DOWN button

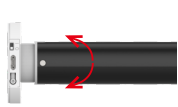


Motor will jog once to confirm the reverse direction

6. TOP limit setting



Press the LEARN button on the back of remote



Motor will jog once and enter programming mode



Press UP to move shade to desired top limit position



Press LEARN again

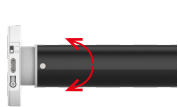


Motor will jog once to confirm the top limit position

7. Bottom limit setting



Press the LEARN button on the back of remote



Motor will jog once and enter programming mode



Press DOWN to move shade to desired bottom limit position



Press LEARN again



Motor will jog once to confirm the bottom limit position

8. Favorite position setting

* If there's no any action within 30's, the motor will exit from limit position preparation automatically

You can set 4 favorite positions between the top and bottom limits



Adjust the shade to desired position. Press the LEARN button on the back of remote.



Motor will jog once and enter programming mode



Press LEARN again



Motor will jog once to confirm new favorite position

9. Limit position fine-tuning



Move the shade to the limit that you want adjusted. Press the LEARN button on the back of remote



Motor will jog once and enter programming mode



Press UP or DOWN to adjust limit position



Press LEARN again



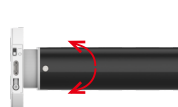
Motor will jog once to confirm new limit position

10. Delete Single Channel program

(if you want to remove one channel's setting, pls do as follows)



Press and hold STOP for 5 seconds



Motor will jog once and enter programming mode

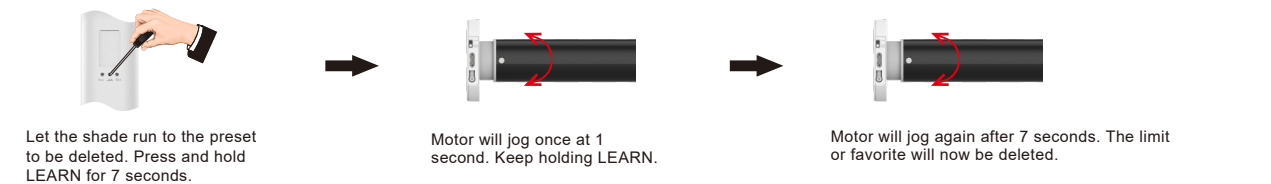


Press and hold LEARN for 1 second

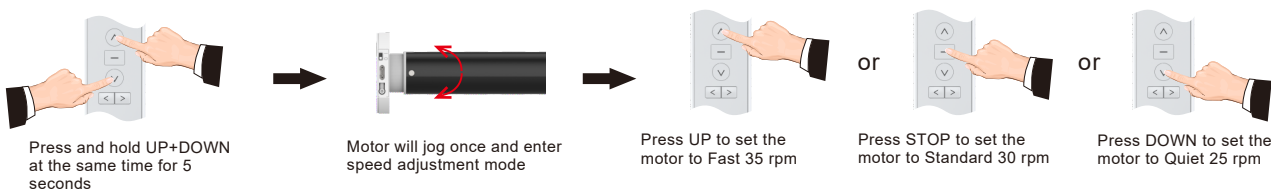


Motor will jog once to confirm channel is removed

11.Deleting the limit or favorite

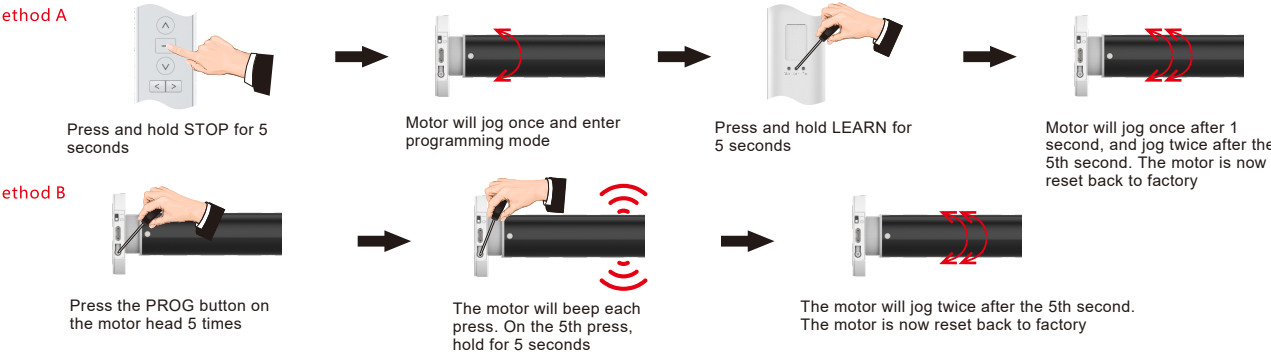


12.Motor Speed Adjustment



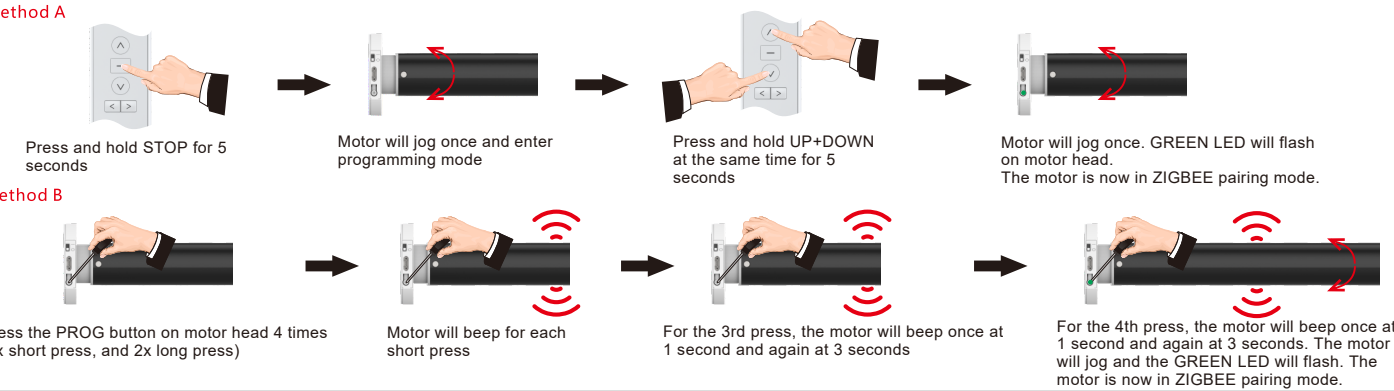
13.Reset motor * (Make sure the interval between each press of the PROG button is less than 1 second)

(There are two methods to reset the motor)



14.ZIGBEE pairing mode * (Make sure the interval between each press of the PROG button is less than 1 second)

(There are two methods to enter ZIGBEE pairing mode)



Supplemental Instruction

- a. Maximum of 6 limit/favorite positions. (Upper + lower limit + 4 favorite positions)
- b. If the first limit programmed is the top limit, all other limits/favorites must be below this position. If the first limit programmed is the bottom limit, all other limits/favorites must be above this position.
- c. All limits and favorites can be fine-tuned. All limits/favorites can be deleted EXCEPT the first limit programmed. You cannot permanently delete the first limit programmed unless you reset the motor back to factory.
- d. When in JOG mode, quick presses of the UP or DOWN buttons move the shade in small increments. Holding UP or DOWN for more than 1 second will move the shade continuously to the next limit or favorite.
- e. When in CONTINUOUS mode, TWO quick presses of the UP or DOWN buttons will move the shade to its top or bottom limit. The shade will skip any favorite positions.
- f. When charging, the LED will be solid RED. When the motor is fully charged, the LED will change to solid GREEN.

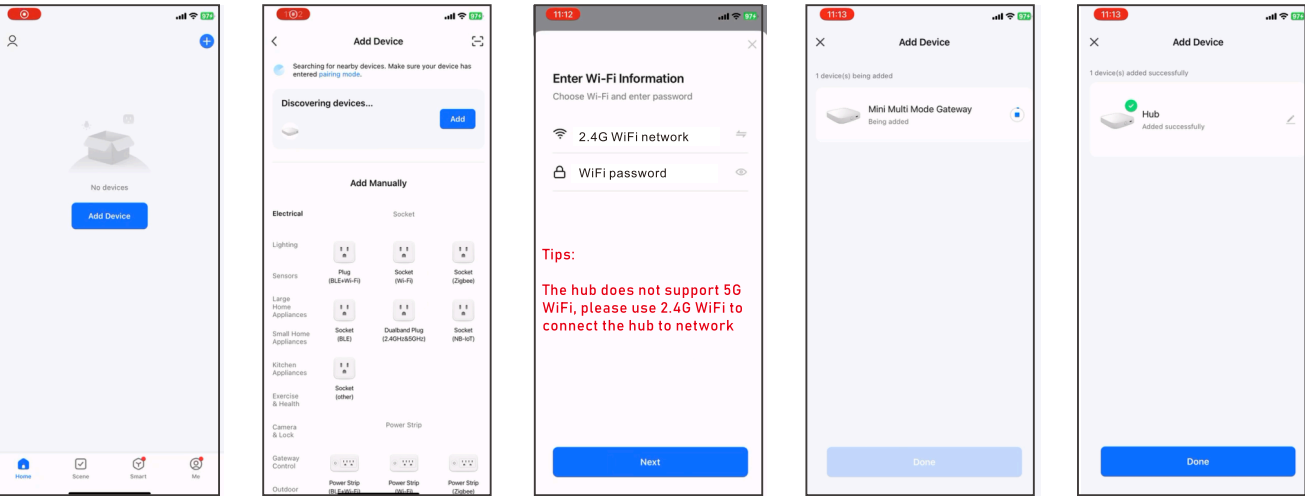
Battery Shortage Alarm:
If the voltage of the battery falls below 7.0V, the motor will beep continuously to signal low battery. The motor will stop when it falls below 6.8V.
At 6.8V, the motor will default to JOG mode. You must charge the motor to restore full functionality.

- g. The charging cable needs to be capable of data transfer. It will not charge otherwise.
- h. The charging cable must use USB-C.

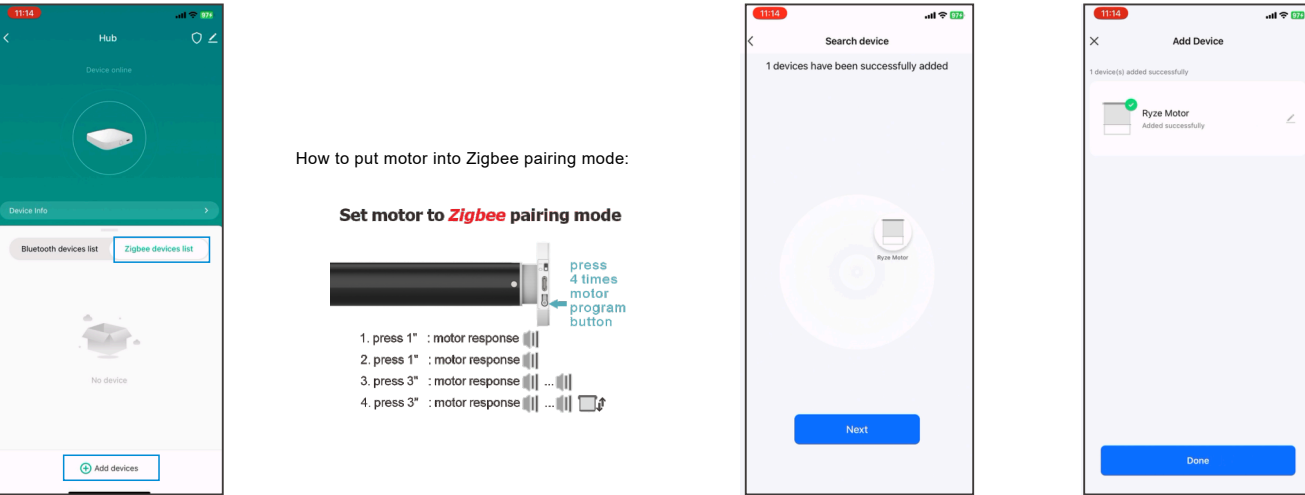
Troubleshooting

Item	Problem	⌂ • ^	⌂ { ^ }
1	The Motor isn't working. It does not move.	A. Power is cut off. B. Battery is dead. C. The motor is installed incorrectly.	A. Check the ON/OFF switch on motor head. Make sure it is set to "1" B. Charge the motor for 6 hours. C. Check the installation. Make sure the motor is installed properly.
2	The Motor stops suddenly during operation.	A. Battery is low. B. There is an obstruction preventing movement.	A. Charge the motor for 6 hours. B. Check the fabric/motor for any obstacles preventing movement.

APP control operation instruction



- 1. Register and login "Smart Life" APP
- 2. Click "Add Device", the APP will search devices.
- 3. When the APP discover the hub, choose "Add"
- 4. Choose 2.4G WiFi and input WiFi password to enable the hub to network.
- 5. Click "Next", the APP will automatically add the hub.
- 6. When the hub successfully added, click "Done"



- 6. Choose "Zigbee devices list".
- 7. Click "Add devices", the hub will search for Zigbee motors.
- 8. Put the motor into Zigbee pairing mode (See above).
- 9. When the hub discovers the Zigbee motors in range, click "Next".
- 10. The hub will automatically add any Zigbee motors, click "Done".
- 11. After the motors have been added, see "Settings" (See below).

